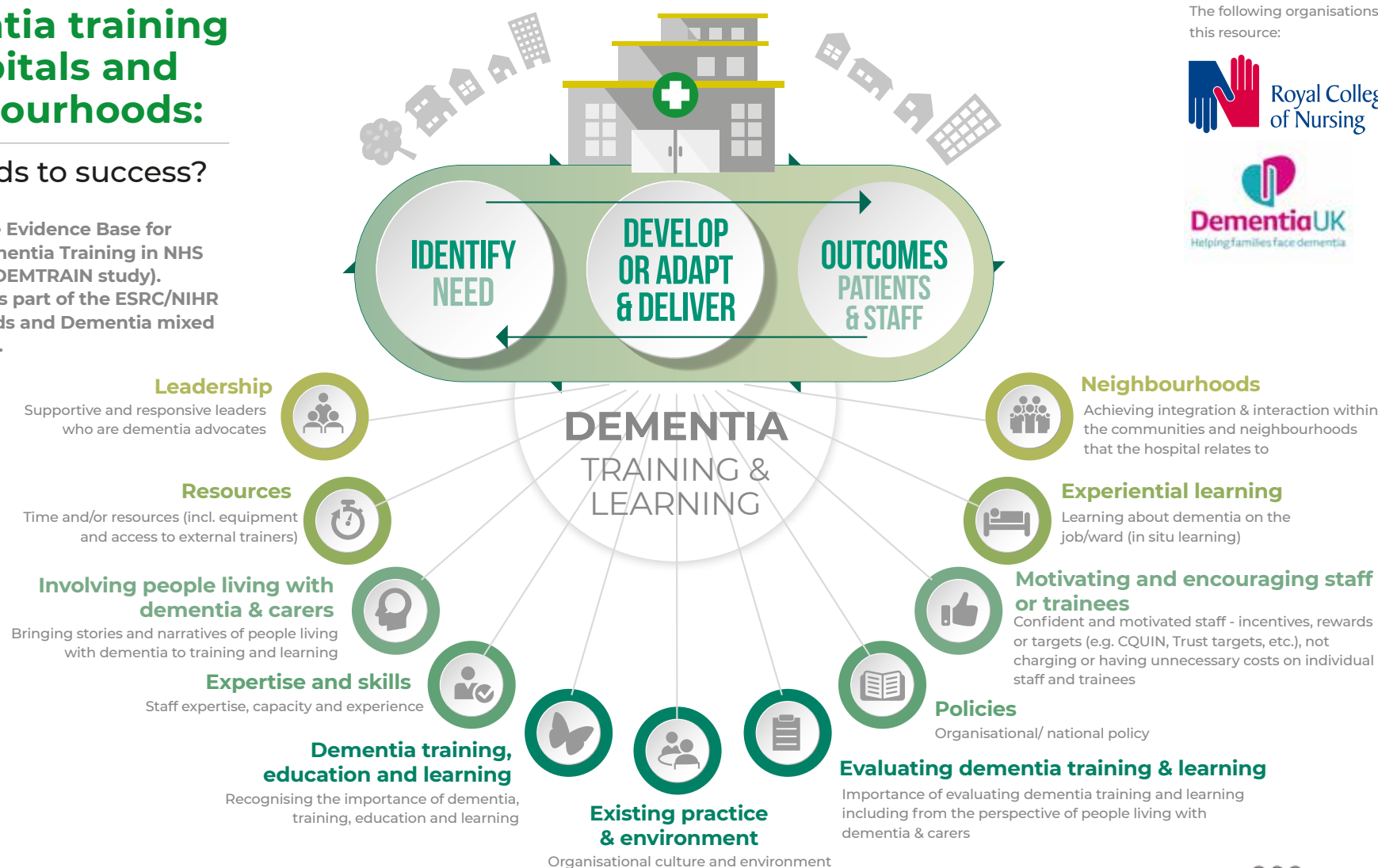


Dementia training in hospitals and neighbourhoods:

What leads to success?

Developing the Evidence Base for Evaluating Dementia Training in NHS Hospitals (the DEMTRAIN study). This work forms part of the ESRC/NIHR Neighbourhoods and Dementia mixed methods study.



The following organisations support the use of this resource:



For more information see: <https://www.bradford.ac.uk/dementia/research/demtrain/> or contact Professor Siobhan Reilly s.reilly@bradford.ac.uk who led this study. The support of the Economic and Social Research Council (ESRC) and National Institute for Health Research (NIHR) is gratefully acknowledged.

@DrSiobhanReilly
@FarazAhmed86
@Hazel_MorbeyLU



People living with dementia, carers, nurses, doctors, health care assistants, allied health professionals, porters, domestics, security, facilities, managers, chaplains and volunteer staff were involved in the development of this resource.